

SealBoss®

IP495 Injection Pump



Product Data Sheet

Injection System
Professional Grade Electric Piston Pump

SealBoss® IP495 Injection Pump

- Pressure Controlled
- Pressure Preadjust Knob
- Automatic Shut-Off
- Single Component
- 3000 PSI, 210 BAR
- Piston System
- Suction Tube
- Mounted on Stand
- Reliable, Easy to Use, Easy to Clean
- Connects to a Wide Range of Packers
- Works with Many Materials

SealBoss® Recommended Products

- SealBoss 1510 Water Stop Foam
- SealBoss 1570 Flexible Foam
- SealBoss 1570 LV Low Viscosity Foam
- SealBoss 1403 SLV Resin
- SealBoss FlexGel Hydrophilic PU Gel
- R 70 Pump Flush Cleaner | Conditioner

More Information | Scan QR Code:

- Videos
- Product Links



The **IP495 Injection Pump**, customized and adapted by SealBoss, is a robust yet compact injection pump. This versatile tool is compatible with a broad array of SealBoss polyurethane injection line products, suitable for those with viscosities ranging from 10 to 800 cps. For more specific information, please get in touch with your SealBoss® technician.

The pump is outfitted with a pressure gauge and a product output assembly, expertly designed to firmly attach to the **SealBoss High Pressure Hose Set**, inclusive of a premium shut-off valve and coupler. Available for separate purchase, the Hose Set can be acquired in a variety of lengths. It offers the option to be fitted with either the standard SealBoss (4 prong) Zerk Coupler or the SealBoss Button Head Slide Coupler, both of which are compatible with the comprehensive SealBoss Mechanical Injection Packer System.

The pump is also equipped with a pressure gauge and a prominent control button for precise adjustments of injection pressure. A unique feature of this pump is its automatic shut-off mechanism that triggers when the set pressure is achieved, and it resumes pumping as the pressure decreases. This attribute not only enhances the injection process speed but also minimizes noise and extends the lifespan of the motor and mechanical components.

Recommended use: Medium to large injection jobs, frequent injection jobs.



Hose extension with valve and packers sold separately

Ask for our "Starter Kit" Option

Technical Data

System:	Displacement Pump
Max Pressure:	3000 psi
Weight:	34 lb, 15.4 kg
Power:	0.75 HP DC Motor, 120 VAC, 60 HZ, 15A
Delivery:	~0.5 gpm, ~1.9 l/min
Max Hose Length:	~330 ft (100 m)

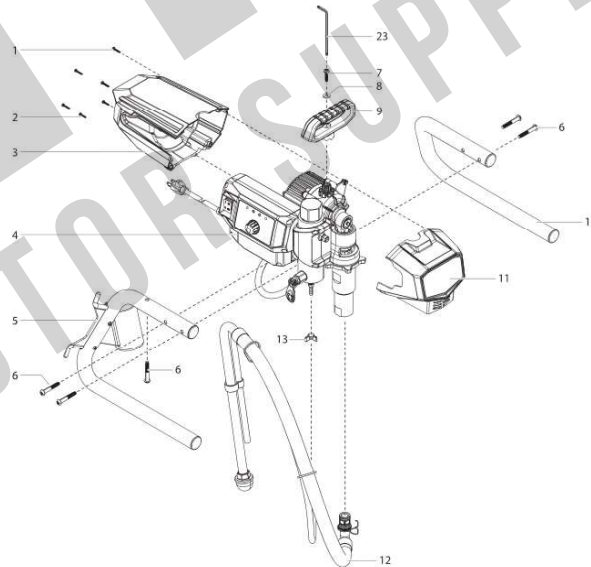
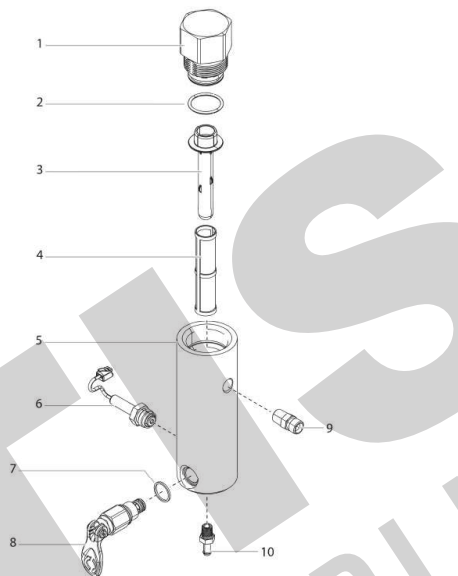
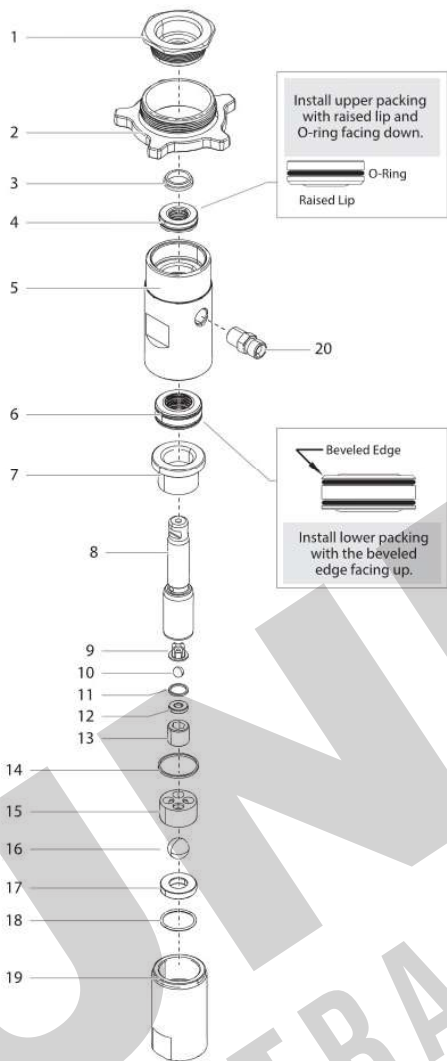
SealBoss®

IP495 Injection Pump



Product Data Sheet

Injection System
Professional Grade Electric Piston Pump



More Information | Scan QR Code:

- Videos
- Product Links



Limited Warranty Policy and Disclaimer for Products Supplied and/or Distributed by SealBoss Corp.: SealBoss Corp. Products are for Professional Use. All recommendations, statements and technical data herein are based on tests we believe to be reliable and correct, but accuracy and completeness of said tests are not guaranteed and are not to be construed as a warranty either expressed or implied. User shall rely on his or her own information and tests to determine suitability of the product for the intended use and user assumes all risk and liability resulting from his or her use of the product. Nothing contained in any supplied materials relieves the user of the obligation to read and follow the warnings and instruction for each product as set forth in the current Technical Data Sheet, product label and Safety Data Sheet prior to product use. SealBoss Corp. warrants supplied / distributed products to be free of manufacturing defects. Seller's and manufacturer's sole responsibility shall be to replace that portion of the product of the manufacturer which proves to be defective. There are no other warranties by SealBoss Corp. of any nature whatsoever expressed or implied, including any warranty of merchantability or fitness for a particular purpose in connection with this product. SealBoss Corp. shall not be liable for damages of any sort, including remote or consequential damages resulting from any claimed breach of any warranty whether expressed or implied. SealBoss Corp. shall not be responsible for use of this product in a manner to infringe on any patent or any other intellectual property rights held by others. In addition, no warranty or guarantee is being issued with respect to appearance, color, fading, chalking, staining, shrinkage, peeling, UV damage, excessive temperature exposure, normal wear and tear or improper application by the applicator. Damage caused by abuse, neglect and lack of proper maintenance, acts of nature and / or physical movement of the substrate or structural defects are also excluded from the limited warranty. SealBoss Corp. reserves the right to conduct performance tests on any material claimed to be defective prior to any repairs by owner, general contractor, or applicator. Neither seller nor manufacturer shall be liable to the buyer or any third person for any injury, loss or damage directly or indirectly resulting from use of or inability to use the product. Recommendations and statements other than those contained in a written agreement signed by an officer of the manufacturer shall not be binding upon the manufacturer or seller. SealBoss Corp. reserves the right to change the properties of products without notice.

Revised 202506

SealBoss Corp. USA info@sealboss.com

ph. 877-932-2293 intl. 1+ 714-662-4445

SealBoss® IP495 Injection Pump